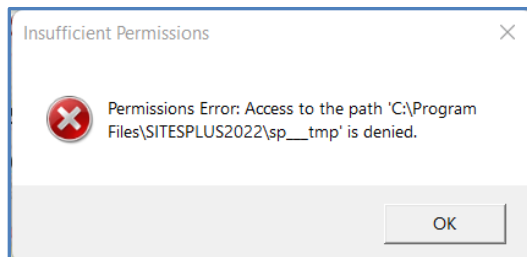


SITESPLUS™ Permissions Issues

Startup Error Messages

When you first start the SITESPLUS™ software, you may receive an error message suggesting that SITESPLUS™ does not have sufficient permission to operate correctly on your computer. The message may appear like the image below.



This error message is received because SITESPLUS™ detects that it cannot create, edit, or save files. Without these abilities you will not be able to save a project or alter your SITESPLUS™ settings.

To correct this issue you must either 1) receive sufficient permissions, or 2) run the software as an administrator. Information on both solutions is described below.

1) Permission Requirements

To operate SITESPLUS™ fully and correctly, you must have certain minimum permissions. You may need the help of your IT professional to establish these.

1. You must be able to create, edit, and write files and folders in the location on your computer where you wish to save your project work.
2. You must be able to create, edit, and write files in the SITESPLUS™ installation folder. These files control the settings and styles of operation.

2) Running As Administrator

In many cases you can eliminate the startup error message by running SITESPLUS™ as an administrator, although your IT department may not allow this. If that is the case, show this document to your IT department and have them establish the “Permission Requirements” described in the previous section.

To run SITESPLUS™ as an administrator:

1. Find the SITESPLUS™ shortcut on your desktop and right-click it.
2. When the menu pops up, click on “Properties”.
3. A dialog window will open. Click on the “Compatibility” tab.

SITESPLUS™ Permissions Issues

4. Make sure to check “Run this program as an administrator”, then click [OK]. If you don’t see this checkbox, or it is grayed out, then you are not allowed to make this change yourself, and you will need to show this document to your IT professional.

Now SITESPLUS™ should start with sufficient permissions to eliminate the startup errors.

